



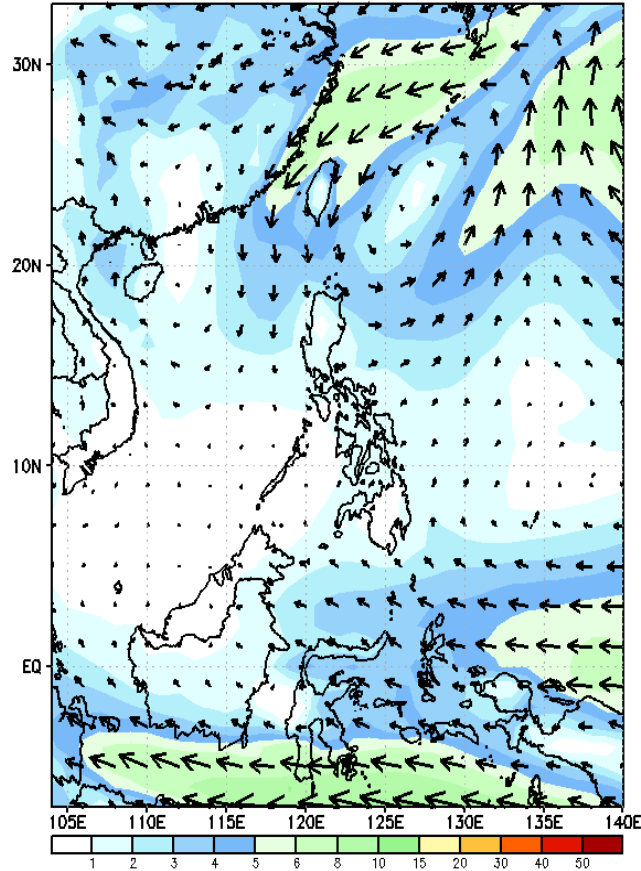
Week 1 & Week 2 Forecast for the Philippines using GEFS Model



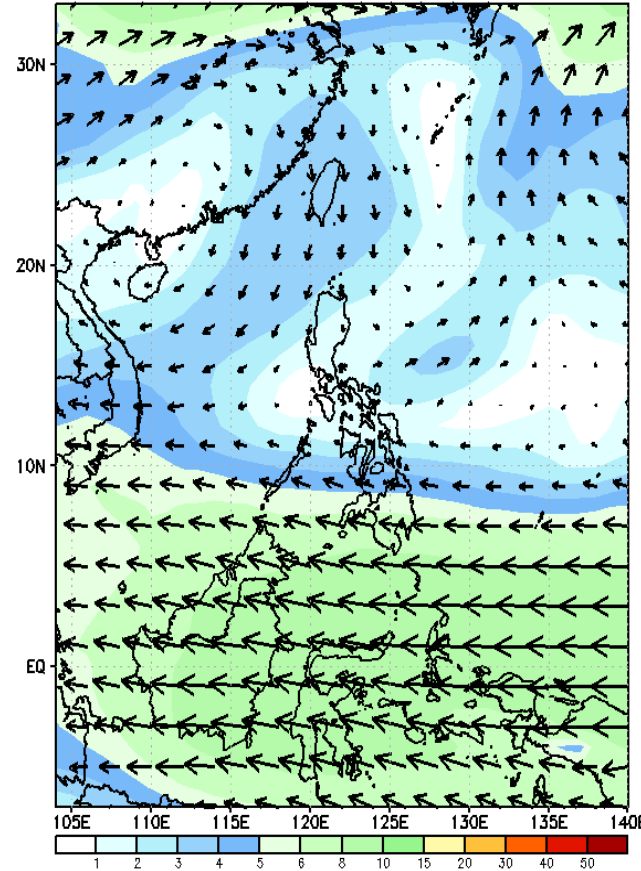
GEFS Week-1 Wind Forecasts:

Week 1: Sep 23-29, 2024

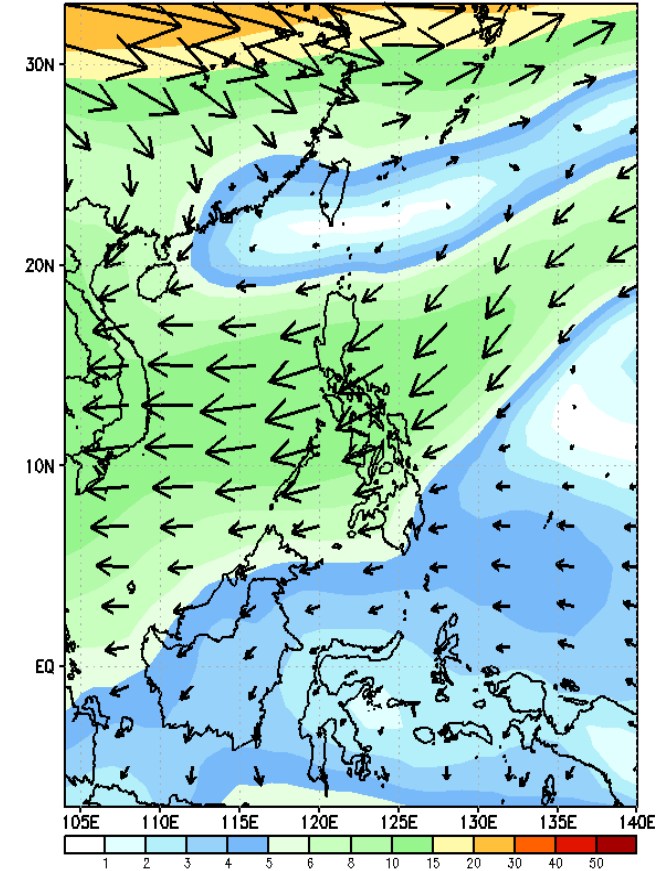
GEFS Week-1 850-hPa Wind Total
Valid: 20240925 - 20241001



GEFS Week-1 500-hPa Wind Total
Valid: 20240925 - 20241001

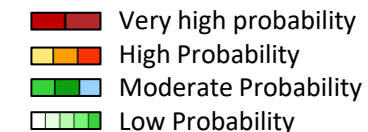


GEFS Week-1 200-hPa Wind Total
Valid: 20240925 - 20241001



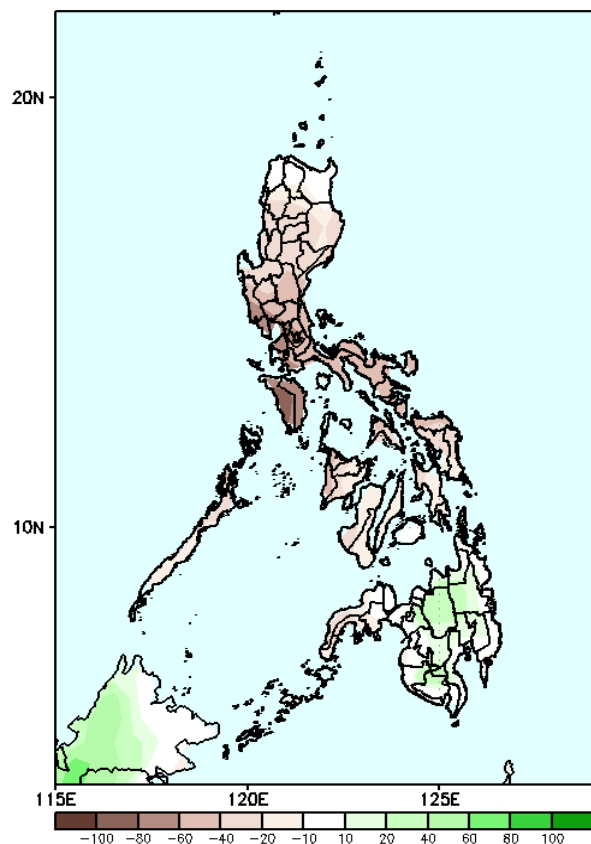
Easterlies affecting most parts of the country.

Precipitation Anomaly and Exceedance Probability > 25/50 mm

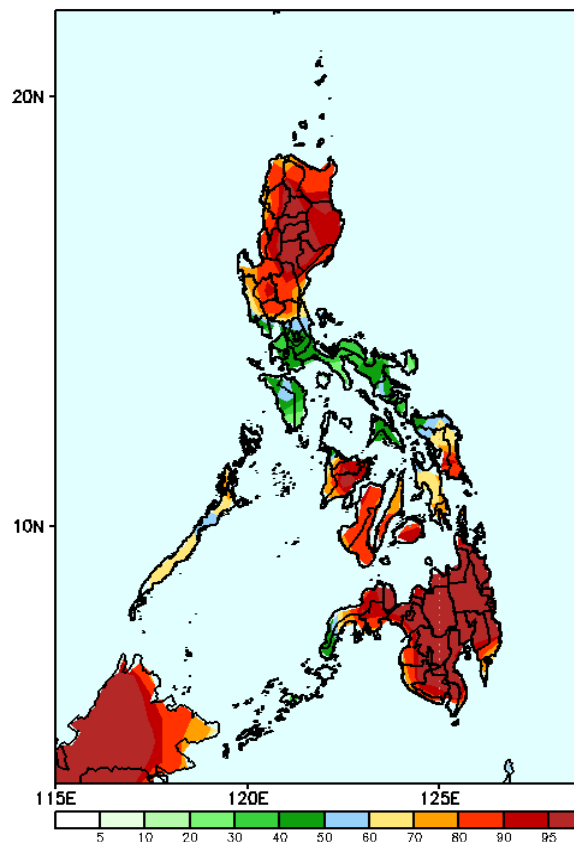


Week 1: Sep 23-29, 2024

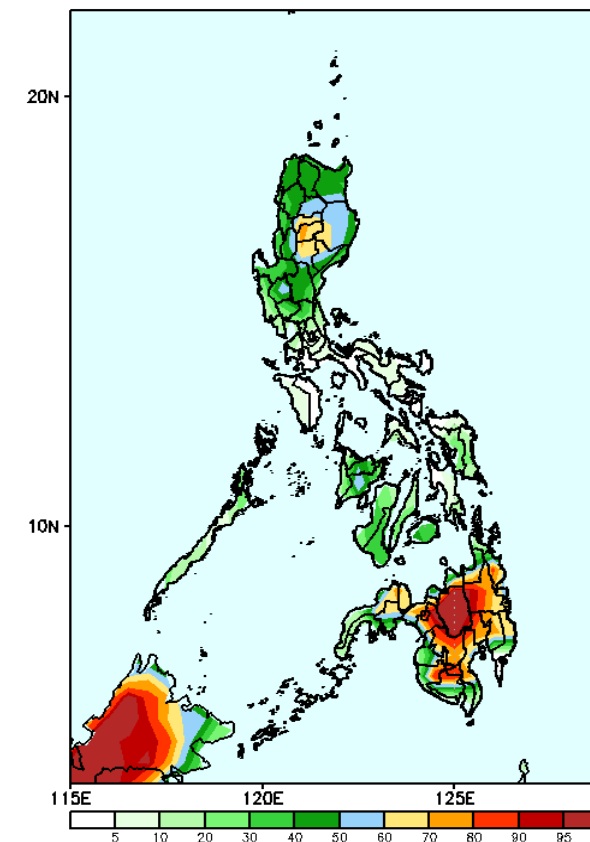
GEFS Week-1 Precip Anomaly
Valid: 20240925 - 20241001



GEFS Week-1 Exceedance Prob. > 25mm
Valid: 20240925 - 20241001



GEFS Week-1 Exceedance Prob. > 50mm
Valid: 20240925 - 20241001



Rainfall deficit of 20-80mm is likely in most parts of Luzon, Visayas and Zamboanga Peninsula while increase of rainfall of 20-40mm is forecasted over the rest of the country.

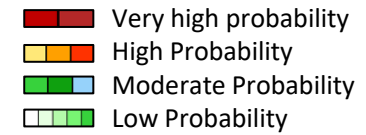
Probability to Exceed 25mm

- High to very high over most parts of Northern and Central Luzon, Western Visayas and most of Mindanao.
- Low to moderate over the rest of the Luzon and Visayas.

Probability to Exceed 50mm

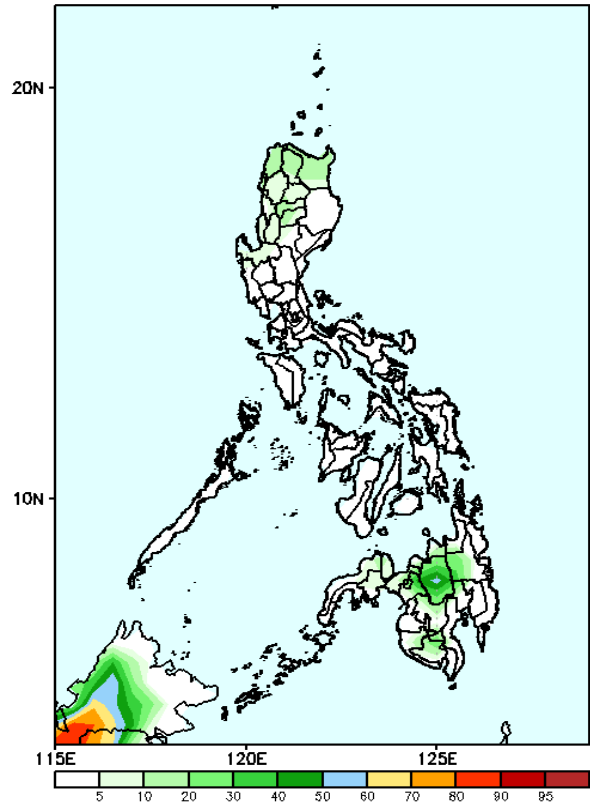
- High to very high over Bukidnon, eastern part of Lanao del Sur and western part of Agusan del Sur;
- Moderate to high over most of Northern Luzon and the rest of Mindanao;
- Low to moderate over the rest of Luzon and Visayas and the western section of Zamboanga Peninsula and the southern most and western most sections of Mindanao.

Exceedance Probability > 100/150/200 mm



Week 1: Sep 23-29, 2024

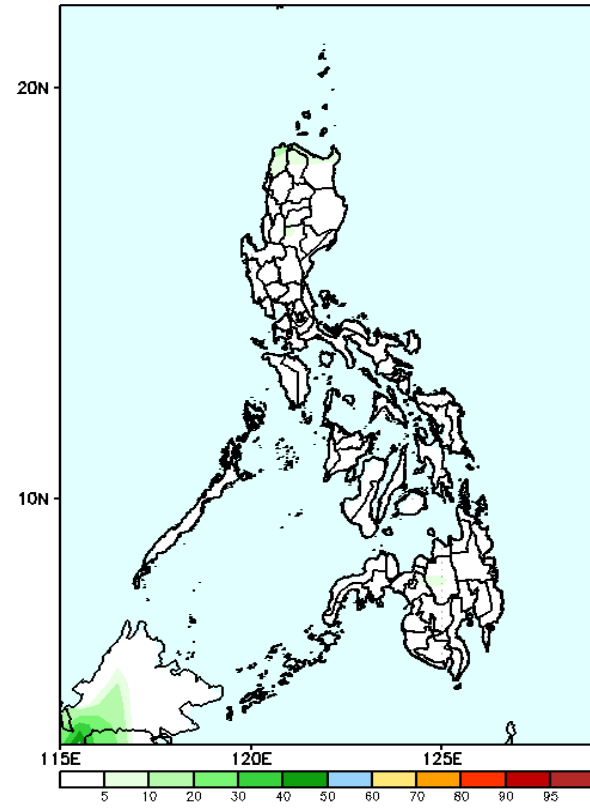
GEFS Week-1 Exceedance Prob. > 100mm
Valid: 20240925 - 20241001



Probability to Exceed 100mm

- Low to moderate over Bukidnon;
- Low over the rest of the country.

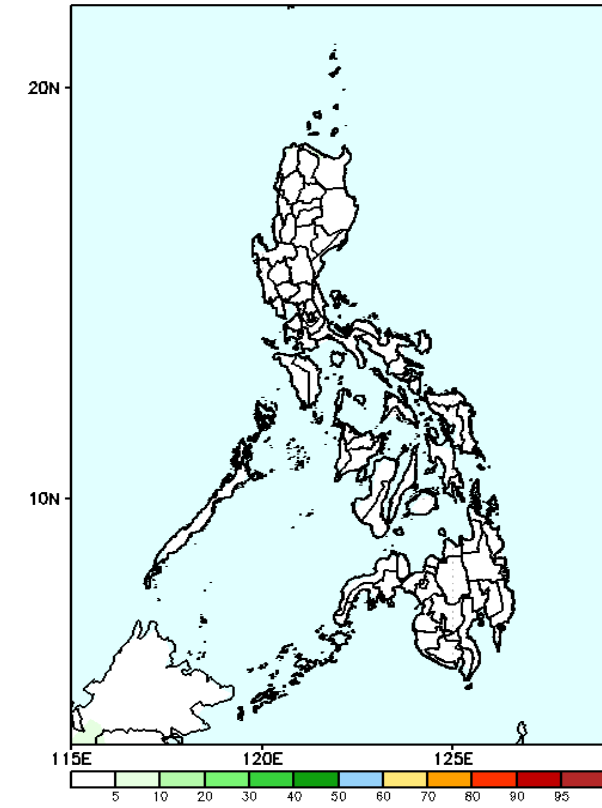
GEFS Week-1 Exceedance Prob. > 150mm
Valid: 20240925 - 20241001



Probability to Exceed 150mm

- Low across the country.

GEFS Week-1 Exceedance Prob. > 200mm
Valid: 20240925 - 20241001



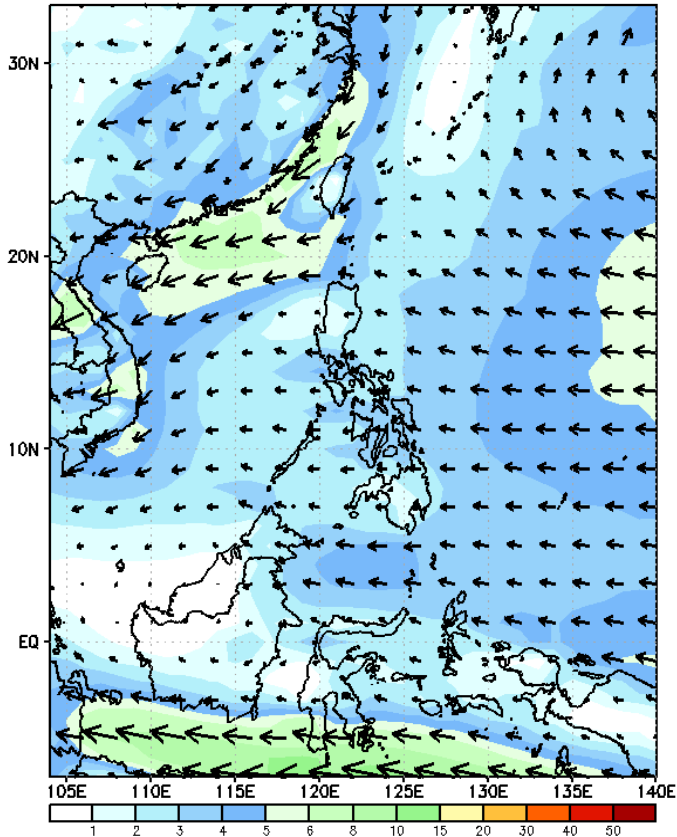
Probability to Exceed 200mm

- Low across the country.

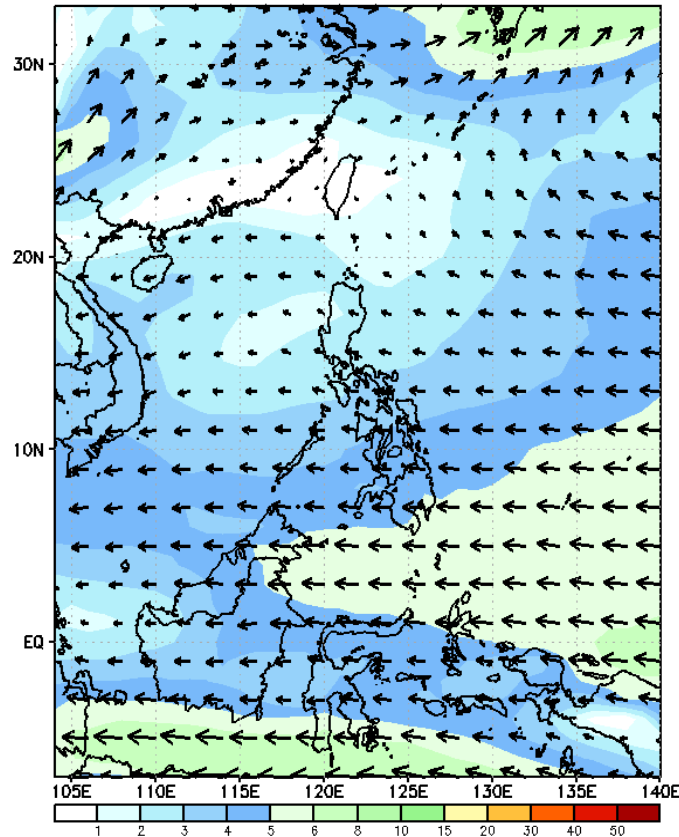
GEFS Week-2 Wind Forecasts:

Week 2: Sep 30- Oct 06, 2024

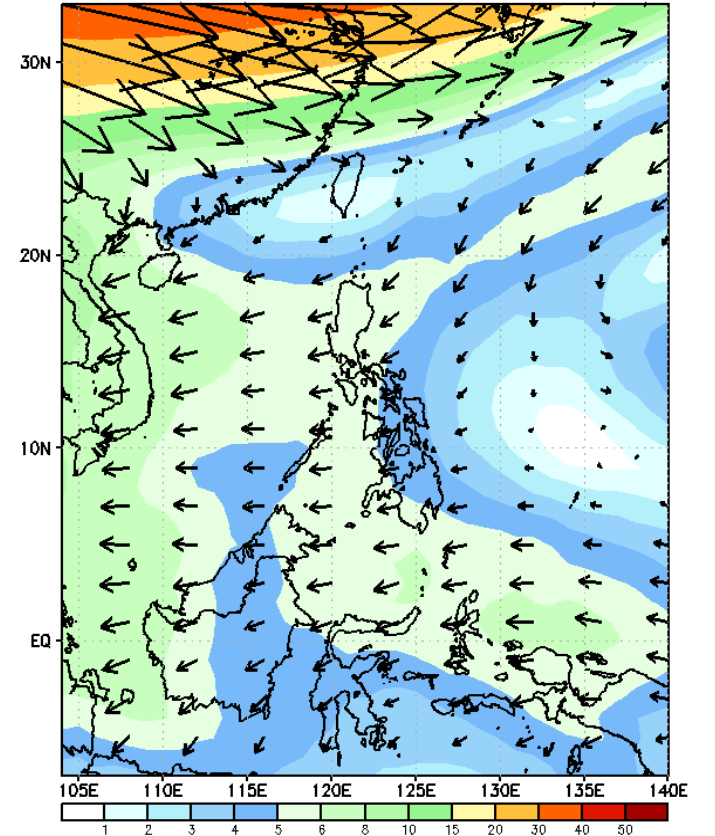
GEFS Week-2 850-hPa Wind Total
Valid: 20241002 - 20241008



GEFS Week-2 700-hPa Wind Total
Valid: 20241002 - 20241008

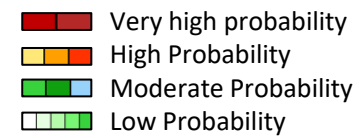


GEFS Week-2 200-hPa Wind Total
Valid: 20241002 - 20241008



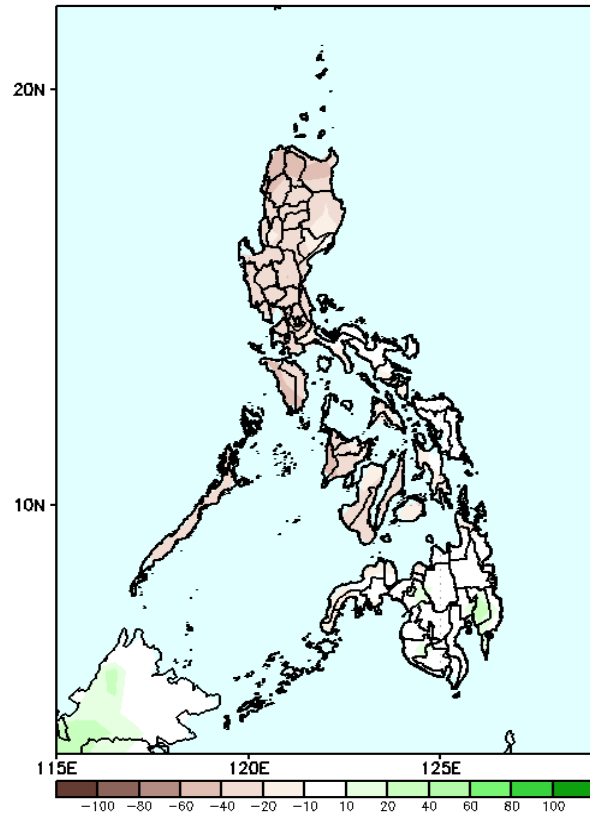
Easterlies affecting most parts of the country.

Precipitation Anomaly and Exceedance Probability > 25/50 mm



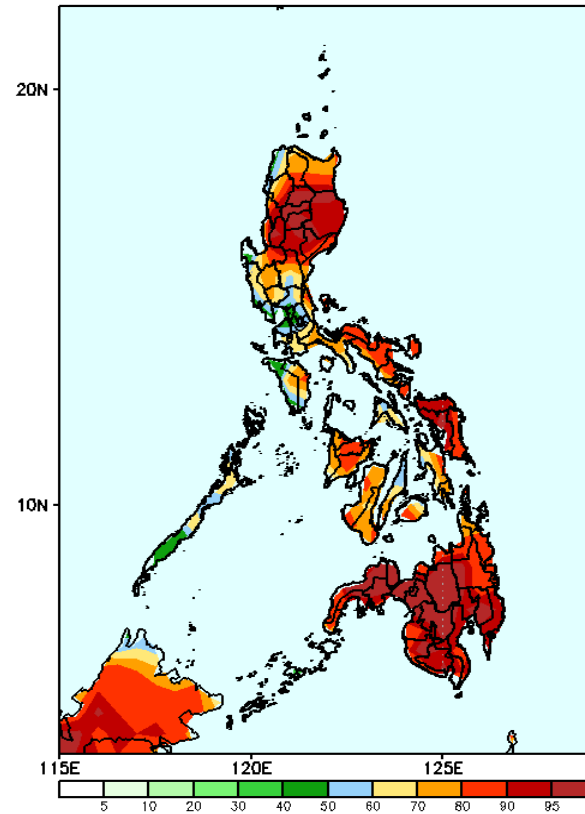
Week 2: Sep 30- Oct 06, 2024

GEFS Week-2 Precip Anomaly
Valid: 20241002 - 20241008



Rainfall deficit of 20-40mm is likely over most parts of Luzon and Visayas;

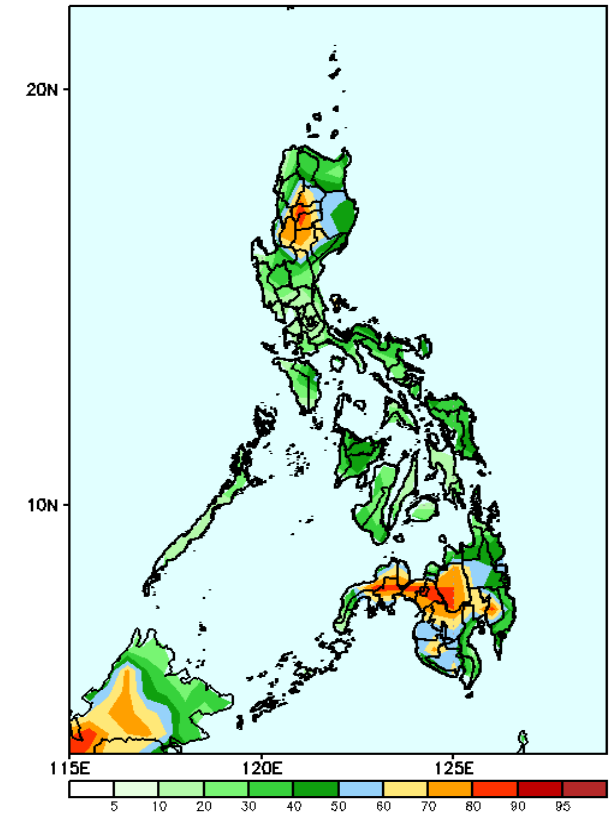
GEFS Week-2 Exceedance Prob. > 25mm
Valid: 20241002 - 20241008



Probability to Exceed 25mm

- High to very high most parts of Northern Luzon, Lanao Provinces and Misamis Occidental;
- Moderate to high over the rest of the country.

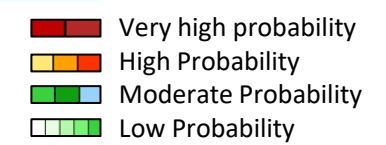
GEFS Week-2 Exceedance Prob. > 50mm
Valid: 20241002 - 20241008



Probability to Exceed 50mm

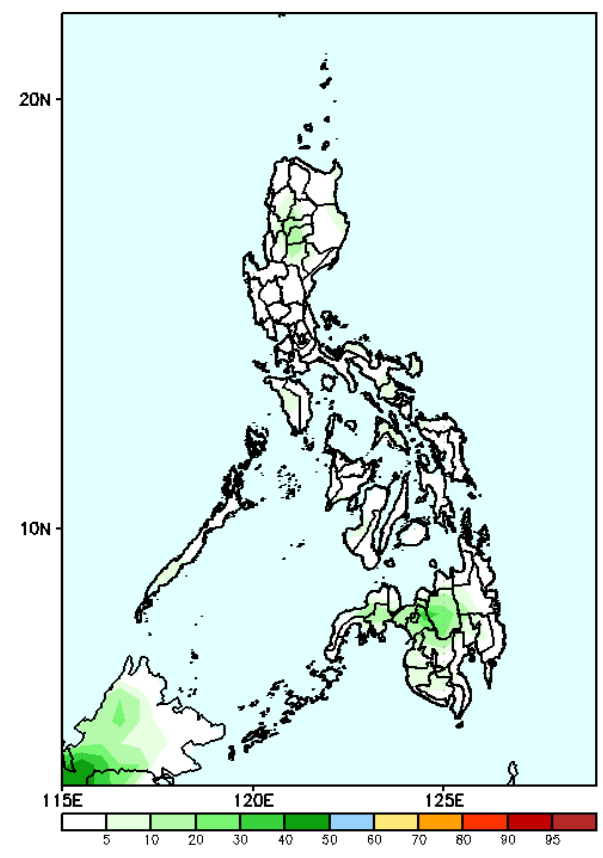
- Moderate to high over the Central part of Northern Luzon, northern part of Nueva Vizcaya and most parts of Mindanao;
- Low to moderate over the rest of Luzon and Visayas.

Exceedance Probability > 100/150/200 mm



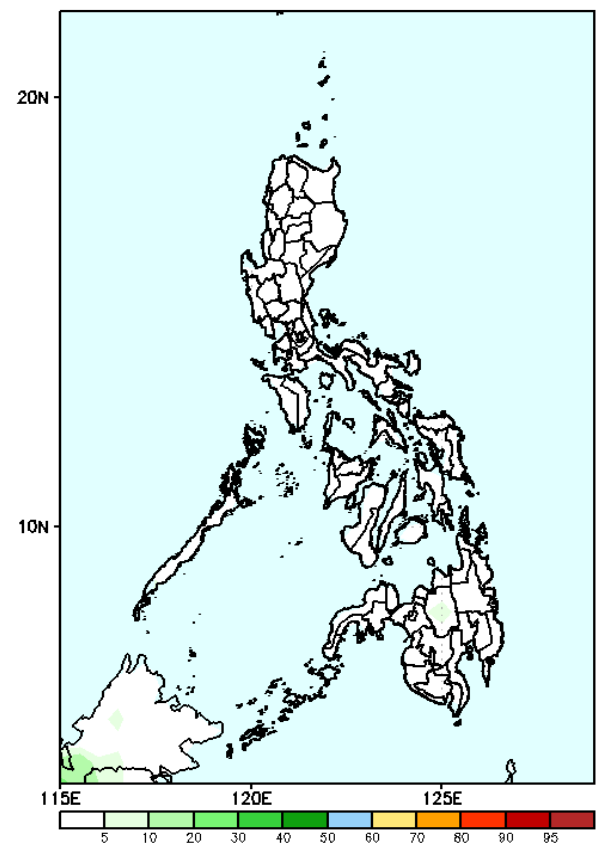
Week 2: Sep 30- Oct 06, 2024

GEFS Week-2 Exceedance Prob. > 100mm
Valid: 20241002 - 20241008



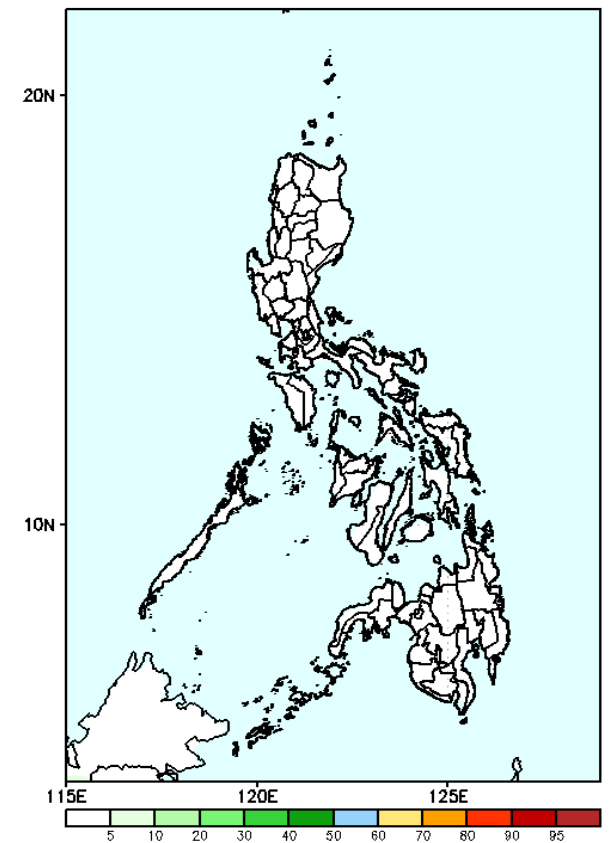
Probability to Exceed 100mm
• Low across the country.

GEFS Week-2 Exceedance Prob. > 150mm
Valid: 20241002 - 20241008



Probability to Exceed 150mm
• Low across the country.

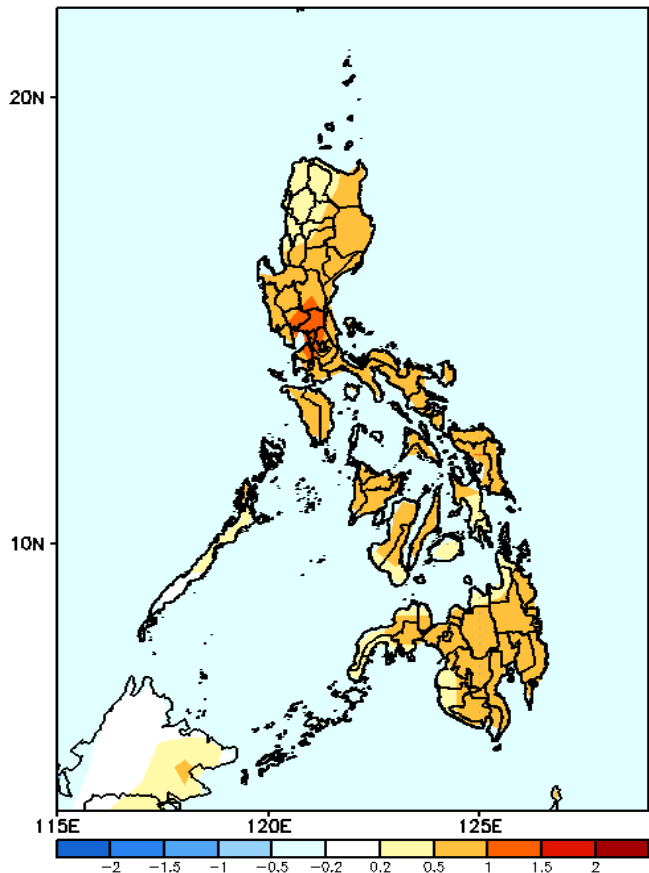
GEFS Week-2 Exceedance Prob. > 200mm
Valid: 20241002 - 20241008



Probability to Exceed 200mm
• Low across the country.

GEFS Week-1 & 2 Forecasts: T2m Anomaly

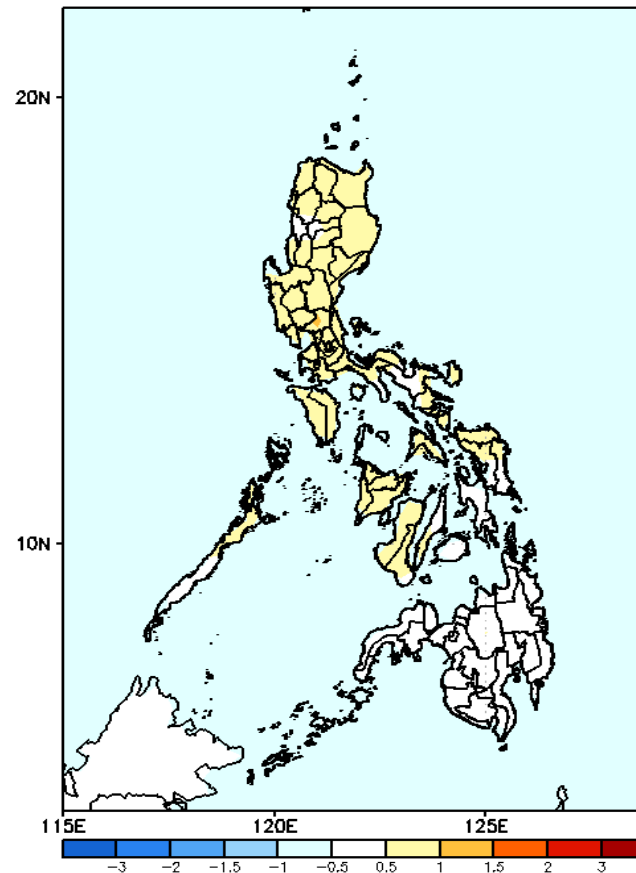
GEFS Week-1 T2m Anomaly
Valid: 20240925 - 20241001



2m Temperature Week 1: Sep 23-29, 2024

Slightly warmer to warmer than average surface air temperature will likely be experienced in most parts of the country.

GEFS Week-2 T2m Anomaly
Valid: 20241002 - 20241008



2m Temperature Week 2: Sep 30- Oct 06, 2024

Slightly warmer average surface air temperature will likely be experienced in most parts of Luzon and Visayas.